



ACT Series

Refrigerated Air Dryers
20 - 3800 SCFM

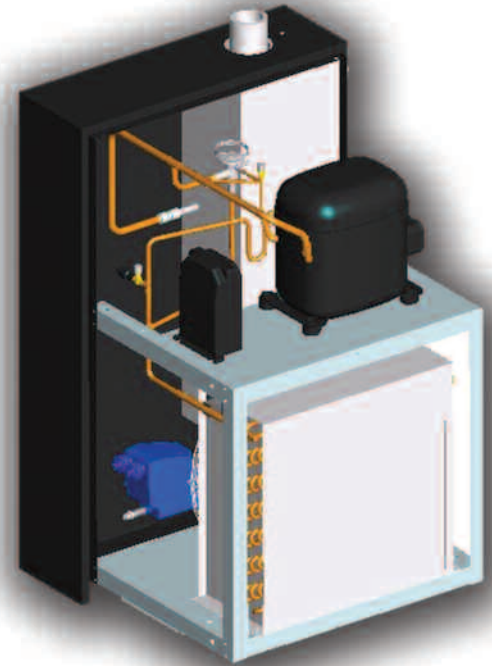
BY **FRIULAIR**
Dryers



ACT Refrigerated Dryers

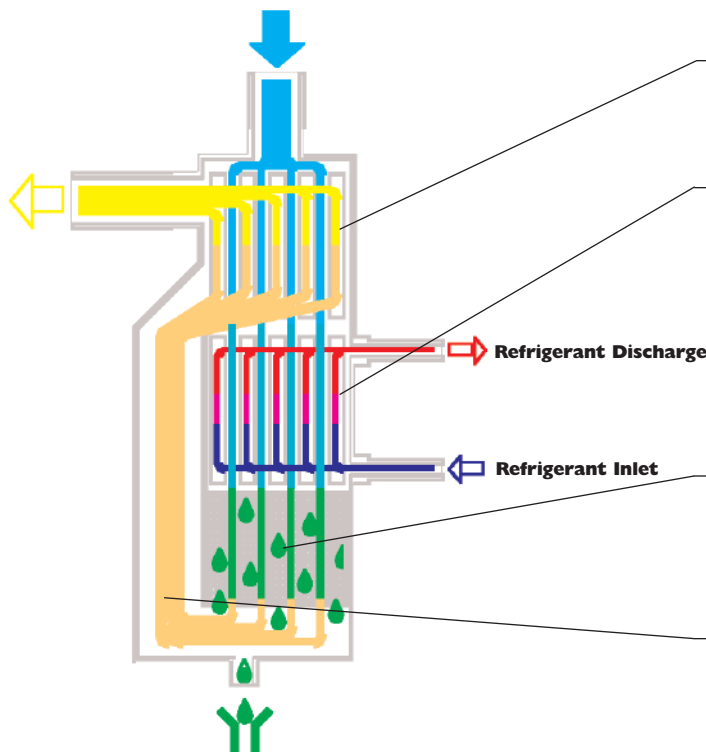
Reducing energy consumption through technology.

Our continuing effort to increase our product offering with new and improved technologies has resulted in **The New ACT Series of Dryers**. Built in conjunction with our strict design parameters, the ACT dryers feature a new aluminum cooling technology heat exchanger module. The **ACT Heat Exchanger** produces the lowest pressure drop ratings in the compressed air industry, resulting in energy dollar savings. Application of the “Constant Pressure By-Pass Valve” delivers a steady Dew Point over all load variations. The cabinetry is state of the art in design, providing a compact footprint with easy to remove panels. All units include an integrated timed condensate drain.



ACT MODULE

The unique design of the aluminum cooling technology heat exchanger combines the air-to-air, air-to-refrigerant and the demister condensate separator.



Maximum heat transfer is achieved in the air-to-air heat exchangers cross-flow design

The large surface areas coupled with the cross-flow of the refrigerant gases in the air-to-refrigerant exchanger ensure no liquid is returned to the refrigeration compressor.

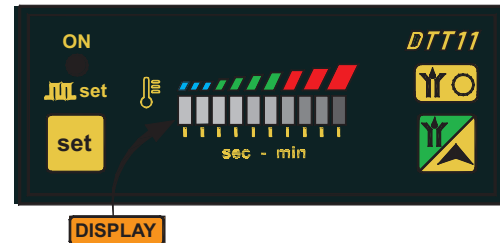
The maintenance free separator is located in the heat exchanger module. The highly efficient coalescing separator provides superior moisture separation.

The large cross-section flow channel results in low velocities, producing low-pressure drop and reduced energy costs.

DIGITAL CONTROLLERS

Dryer operation and monitoring is controlled via an electronic controller.

The DTT11 Digital Temperature Thermometer is standard on all 115v and 230v single-phase units. The digital LED displays the current operating dew point and provides operational controls for the condensate drain along with a remote alarm signal function.



The DMC12 Air Dryer Controller is standard on all 460v 3-phase dryers. The digital LED displays the current operating dew point and provides operational controls for the condensate drain. In addition the DMC12 includes a high dew point alarm.



“HOT GAS” BY-PASS VALVE

An innovative design, new to the industry utilizes a thermostatic bulb to control suction pressure. This ensures dryer performance regardless of load conditions and eliminates freeze-up at low loads. Calibrated at the factory, the valve never needs adjustment in the field, resulting in simpler maintenance.



CONDENSATE DRAIN

All models are fitted with a timed electronic drain. Interval and duration times are adjustable from the digital controller. Zero loss drains are available as an option.



INLET AIR TREATMENT

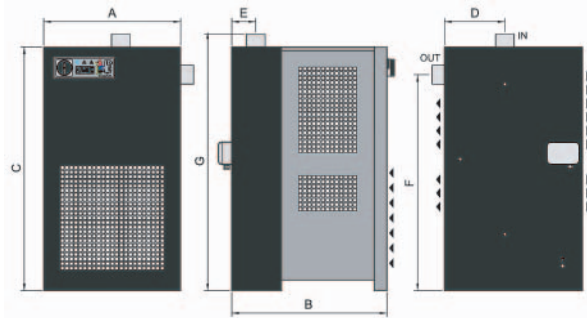
Due to the geometric configuration of the heat exchanger, a **BelAir FT Series** filter of at least 1.0 micron is required. This will prevent fouling from rust, scale or other solid particulates pollutants, resulting in prolonged life of the ACT heat exchanger module.



SPECIFICATIONS AND DIMENSIONS

*Capacity is rated according to CAGI Std No. ADF100 "Refrigerated Compressed Air Dryers-Method for testing and rating." Pressure dew point@100 psig inlet air pressure, 100°F inlet air temperature, 100°F ambient air temperature with a 5 psig maximum pressure drop.

Maximum working pressure 200 psi. Maximum inlet air temperature 115°F. Maximum ambient temperature 115°F. Consult factory for higher temperature applications.



Please note; inlet air connection is located on top of unit for models ACT12-ACT1000. Dimensions include connection fitting. Dimensions are rounded to the nearest inch.

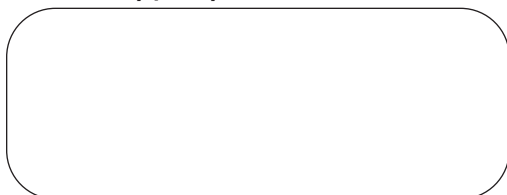
() Specify Voltage, 1=115/1/60, 2=230/1/60, 3=230/3/60, 4=460/3/60

Capacity* Models (scfm)	Voltage	Pressure Drop (psi)	Standard Controller	Connections (NPT-F or FLG)	Dimensions L x W x H (in)	Weight (lbs.)	Refrigerant
ACT20-()	115/1/60 or 230/1/60	0.5	DTT11	1/2" NPT-F	14x17x31	62	R134.a
ACT30-()	115/1/60 or 230/1/60	1.2	DTT11	1/2" NPT-F	14x17x31	66	R134.a
ACT50-()	115/1/60 or 230/1/60	2.2	DTT11	1/2" NPT-F	14x17x31	70	R134.a
ACT75-()	115/1/60 or 230/1/60	3.2	DTT11	1" NPT-F	19x17x33	90	R134.a
ACT100-()	115/1/60 or 230/1/60	1.9	DTT11	1.1/4" NPT-F	19x17x33	98	R134.a
ACT125-()	115/1/60 or 230/1/60	2.9	DTT11	1.1/4" NPT-F	19x17x33	105	R404A
ACT150-()	115/1/60 or 230/1/60	3.4	DTT11	1.1/4" NPT-F	19x17x33	110	R404A
ACT200-()	115/1/60 or 230/1/60	2.3	DTT11	1.1/2" NPT-F	20x21x35	125	R404A
ACT200-4	460/3/60	2.3	DMC12	1.1/2" NPT-F	20x21x35	145	R404A
ACT250-2	230/1/60	3.5	DTT11	1.1/2" NPT-F	20x21x35	140	R404A
ACT250-4	460/3/60	3.5	DMC12	1.1/2" NPT-F	20x21x35	160	R404A
ACT300-2	230/1/60	1.8	DTT11	2" NPT-F	21x22x36	240	R404A
ACT300-4	460/3/60	1.8	DMC12	2" NPT-F	21x22x36	260	R404A
ACT350-2	230/1/60	2.1	DTT11	2" NPT-F	21x22x36	250	R404A
ACT350-4	460/3/60	2.1	DMC12	2" NPT-F	21x22x36	270	R404A
ACT400-2	230/1/60	1.5	DTT11	2.1/2" NPT-F	22x24x37	265	R404A
ACT400-4	460/3/60	1.5	DMC12	2.1/2" NPT-F	22x24x37	285	R404A
ACT500-4	460/3/60	2.6	DMC12	2.1/2" NPT-F	22x24x37	300	R404A
ACT600-4	460/3/60	2.2	DMC12	3" Flange	31x38x59	405	R404A
ACT800-4	460/3/60	3.4	DMC12	3" Flange	31x38x59	420	R404A
ACT1000-4	460/3/60	2.7	DMC12	3" Flange	31x38x59	600	R404A
ACT1250-4	460/3/60	2.8	DMC12	3" Flange	31x41x59	620	R404A
ACT1500-4	460/3/60	3.2	DMC12	4" Flange	53x61x73	1200	R404A
ACT1750-4	460/3/60	2.2	DMC12	4" Flange	53x61x73	1300	R404A
ACT2000-4	460/3/60	2.7	DMC12	4" Flange	53x61x73	1350	R404A
ACT2500-4	460/3/60	2.8	DMC12	4" Flange	53x61x73	1450	R404A
ACT2800-4	460/3/60	2.6	DMC20	6" Flange	55x73x73	1500	R404A
ACT3200-4	460/3/60	2.2	DMC20	6" Flange	55x89x73	1750	R404A
ACT3800-4	460/3/60	2.5	DMC20	6" Flange	55x89x73	850	R404A

Visit us at our new website: www.belairtech.net



Buy from your local distributor



DELAWARE OFFICE

149 Rickey Blvd. Bear, DE 19701

Phone: 302-832-5800 Fax: 302-832-5900

COLORADO OFFICE

10200 East 106th Ave., Brighton, CO 80601

Phone: 303-287-6666 Fax: 720-554-7758